

# osom<sup>®</sup>

## iFOB Test



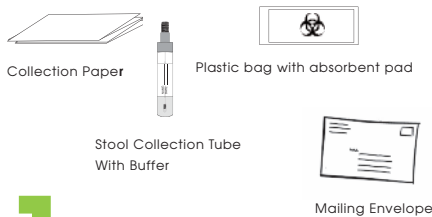
### PATIENT STOOL COLLECTION INSTRUCTIONS

#### READ INSTRUCTIONS THOROUGHLY BEFORE BEGINNING TEST

#### YOUR PATIENT STOOL COLLECTION PACK SHOULD CONTAIN:

- Stool Collection Tube with Buffer
- 1 Collection Paper
- 1 Plastic Bag with absorbant Pad
- 1 Return Mailing Envelope
- 1 Instructions for collecting sample

#### CONTENT OF KIT



# 1

#### WHEN YOU ARE READY TO HAVE A BOWEL MOVEMENT, LABEL THE STOOL COLLECTION TUBE AS SHOWN BELOW:

- Using a ballpoint pen, write your name and date of stool collection on tube label.

**osom<sup>®</sup>**  
**iFOBT**  
**Stool Collection Tube**

2 mL

Name \_\_\_\_\_  
 ID \_\_\_\_\_  
 Date \_\_\_\_\_

PL1913

2°C - 38°C

MF

Sekou Diagnostics, LLC  
 6559 Top Gun Street  
 San Diego, CA 92121 USA

LOT

EXP

# 2

#### ATTACH COLLECTION SHEET TO TOILET BOWL:

- Take Collection Paper out of the envelope.
- Lift toilet seat.
- Peel off cover strip from the tape on each end of the paper.
- Place collection sheet across the toilet bowl. Allowing sheet to sag slightly.
- Secure the paper onto the side first by placing adhesive tabs on the sides of the toilet rim, then secure the other side.
- Lower the toilet seat.



# 3

#### MAKE BOWEL MOVEMENT ONTO COLLECTION SHEET:

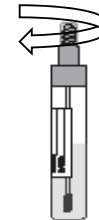
- **DO NOT** allow collection paper or feces to come in contact with toilet water or urine.
- The sample should not be tested if it becomes wet or contaminated.

**CAUTION:** If sample becomes contaminated with urine or toilet water, **DO NOT** continue. If this happens, a new sample will need to be collected. Place a clean collection paper on the toilet bowl, then collect new feces sample for testing.

# 4

#### STOOL SAMPLE COLLECTION

- Unscrew the Sampler cap from the Stool Collection Tube.
- Do not spill or pour out the liquid.



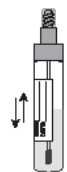
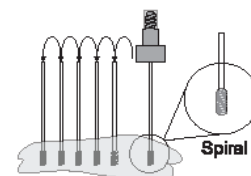
Stool Collection Tube

Spiral End

# 5

#### OBTAIN STOOL SAMPLE

- With the stool still on the Collection Paper, randomly poke the spiral end of the Sampler in at least 6 different sites of the stool. **DO NOT SCOOP.**
- Insert the Sampler back into the Stool Collection Tube and firmly tighten screw cap.
- Shake the tube well to mix the stool.

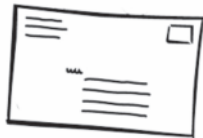


### PATIENT STOOL COLLECTION INSTRUCTIONS

## 6

#### MAILING

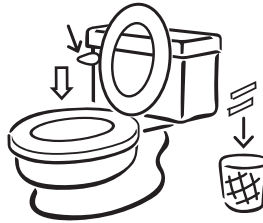
- Place Stool collection tube in plastic bag and seal.
- Place plastic bag in mailing envelope.
- Peel tape from envelope flap
- Fold flap on prefold line and press firmly.



## 7

#### FLUSH TOILET

- Flush remaining fecal sample and used collection sheet down the toilet.

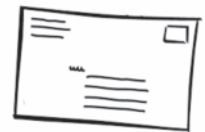


- If you have a low flow toilet, discard the collection sheet in trash to avoid clogging.

## 8

#### RETURN THE SAMPLE

- Write your return address and the name and address of the doctor/lab who gave you the stool collection pack in the space provided on the Return Mailing Envelope.
- Add appropriate postage and mail to your doctor's office/lab.



#### IMPORTANT

##### Contact your doctor if you:

- See blood in the toilet or in your stool.
- Have medical-related questions.

##### Contact Sekisui Diagnostics Technical Support if you:

- Are having difficulty or do not understand how to collect your sample.
- Find any of the components listed at the top of these instructions missing when you opened the packet.
- Need a replacement of stool collection tube or envelope.

#### CONTACT INFORMATION FOR SEKISUI DIAGNOSTICS

Tel: 800-332-1042 (U.S. only)



Sekisui Diagnostics, LLC  
6659 Top Gun Street  
San Diego, CA 92121 USA  
800-332-1042



Princeton BioMeditech Corporation  
4242 US Highway 1  
Monmouth Junction, NJ 08852 USA  
1-732-274-1000  
www.pbmc.com